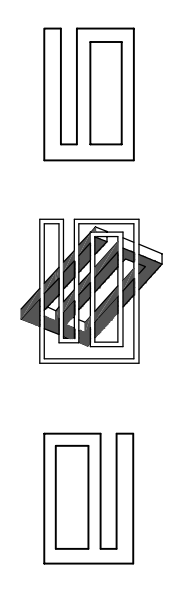


All material herein remains property of the architect noted below.

Giancarlo Garofalo Architect Inc.
www.ggarofalo.ca

672 D'Avant Street Suite 309
Toronto, Ontario M6G 1Z6
T: 416.531.1265
F: 416.531.4733
e: ggarofalo@earthlink.ca

THE GENERAL CONTRACTOR SHALL REPORT AND VERIFY ALL DIMENSIONS AND REPORT ERRORS AND OMISSIONS TO THE ARCHITECT. DRAWINGS MUST NOT BE SCALED.
THIS DRAWING SHALL NOT BE USED FOR CONSTRUCTION PURPOSES UNLESS COUNTERSIGNED BY:



Consultant
Address
Phone
Fax
e-mail

Consultant
Address
Phone
Fax
e-mail

Consultant
Address
Phone
Fax
e-mail

ONTARIO ASSOCIATION OF ARCHITECTS
GIANCARLO GAROFALO ARCHITECT INC.
REGISTERED ARCHITECT
LENDING

No.	Description	Date
1	Issued for Permit	Oct. 11/11
2	Revised as per Public Health examiner Oct. 20/11	

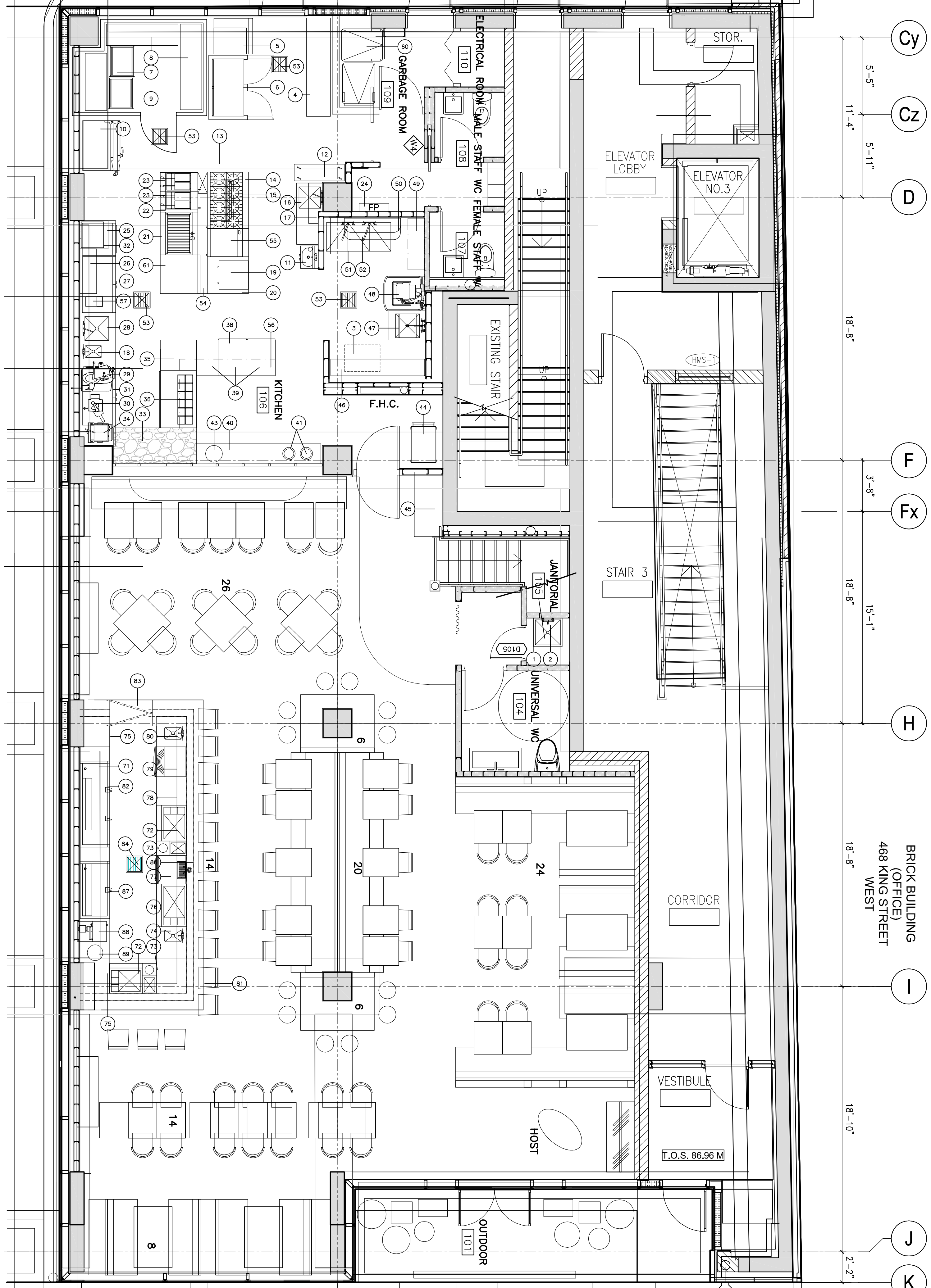
No.	Description	Date
1	3 DOOR BEER COOLER	
2	COCKTAIL MIX UNITS C/ WITH SINK	
3	BAR MIXER	
4	GLASS STORAGE COUNTER C/W HAND SINK	
5	FILLER COUNTER	
6	ICE CHEST (COCKTAIL MIX)	
7	GLASS STORAGE CABINET	
8	GLASS STORAGE CABINET	
9	GLASS WASHER	
10	COUNTER WITH DUMP SINK	
11	BAR COUNTER BY INTERIOR DESIGNER	
12	BACK BAR COUNTER AND DISPLAY BY INTERIOR DESIGNER	

478 KING STREET WEST
Toronto, Ontario

GROUND FLOOR FURNITURE PLAN

Project number: 21
Date: 12 Aug. 2011
Drawn by: M.M.
Checked by: G.G.

A102
as scale noted



- EQUIPMENT LIST**
- KITCHEN**
- 1- (1) MOP BUCKET
 - 2- (1) GREASE INTERCEPTOR (IN FLOOR)
 - 3- (1) DRY STORAGE
 - 4- (1) ICE MAKER COLD DRAFT 350 CAPACITY WITH 400 BIN
 - 5- (1) TWO DOOR REACH-IN FREEZER
 - 6- (1) MOBILE RACKS
 - 7- (2) COLD STORAGE SHELVING
 - 8- (1) WALK-IN FREEZER
 - 9- (1) COMBI OVEN/STEAMER WITH VENT LESS HOOD
 - 10- (1) WALL MOUNT, HAND SINK
 - 11- (1) MOBILE POT RACK
 - 12- (1) EXHAUST HOOD - ISLAND STYLE
 - 13- (1) COMBINATION (SIX BURNER, 24" GRIDDLE, 2 OVENS) RANGE
 - 14- (1) SACAMANDER BROILER
 - 15- (1) COUNTER WITH UTILITY SINK
 - 16- (1) S/STEEL DOUBLE WALL SHELF
 - 17- (1) HAND SINK (DROP-IN)
 - 18- (1) UNDER COUNTER REFRIGERATOR (TWO DRAWERS)
 - 19- (1) WORK/PLATING COUNTER
 - 20- (1) 36" CHAR BROILER
 - 21- (1) SPREADER CABINET
 - 22- (2) 35 LBS. FRIERS
 - 23- (1) FIRE SUPPRESSION SYSTEM
 - 24- (1) S/STEEL DOUBLE WALL SHELF
 - 25- (1) UNDER COUNTER REFRIGERATOR (TWO DOORS)
 - 26- (1) COUNTER WITH UTILITY SINK
 - 27- (1) SLICER
 - 28- (1) VEG. PROCESSOR (ROBOT COUPE)
 - 29- (1) UNDER COUNTER REFRIGERATOR (TWO DOORS)
 - 30- (1) MARBLE TOP TABLE (DESERT WORK STATION)
 - 31- (1) PANINI MACHINE
 - 32- (1) SALAD / SANDWICH TABLE
 - 33- (1) S/S DOUBLE OVER SHELF (2" SHAPED) HEAT AT HOT PICKUP, LIGHT AT COLD
 - 34- (1) HOT FOOD WELL
 - 35- (1) SERVING COUNTER WITH REFRIG. BASE
 - 36- (3) HEAT LAMPS (CEILING MOUNT.)
 - 37- (1) WAITRESS WORK STATION
 - 38- (1) SOUP KETTLES
 - 39- (1) NOT USED
 - 40- (1) BUSSING CART (ALTERNATIVE SOILED DISH DROP-OFF
 - 41- (1) SERVICE STATION
 - 42- (1) SLANTED BA SLICE SHELF
 - 43- (1) SOILED DISABLING WITH PRE - RINK SINK
 - 44- (1) DISHWASHER (VENT LESS)
 - 45- (1) S/S WALL SHELF
 - 46- (1) CLEAN DRAIN BOARD
 - 47- (1) TWO COMP. POT SINK
 - 48- (1) WALL MOUNT. UTENSIL RACK
 - 49- (1) FLOOR DRAINS

- BAR**
- 71- (1) 3 DOOR BEER COOLER
 - 72- (2) COCKTAIL MIX UNITS C/ WITH SINK
 - 73- (1) BAR MIXER
 - 74- (1) GLASS STORAGE COUNTER C/W HAND SINK
 - 75- (1) FILLER COUNTER
 - 76- (1) ICE CHEST (COCKTAIL MIX)
 - 77- (1) GLASS STORAGE CABINET
 - 78- (1) GLASS STORAGE CABINET
 - 79- (1) GLASS WASHER
 - 80- (1) COUNTER WITH DUMP SINK
 - 81- (1) BAR COUNTER BY INTERIOR DESIGNER
 - 82- (1) BACK BAR COUNTER AND DISPLAY BY INTERIOR DESIGNER

1 GROUND FLOOR FURNITURE PLAN
A102 SCALE 1:50