



VENUE INFORMATION PACKAGE

11 POLSON STREET, TORONTO, ON, M5A 1A4

T: (416) 469 5655 | F: (416) 469 5547

VISIT WEBSITE

 @INKVENUES

 @INKVENUES

 INK VENUES



WELCOME TO REBEL



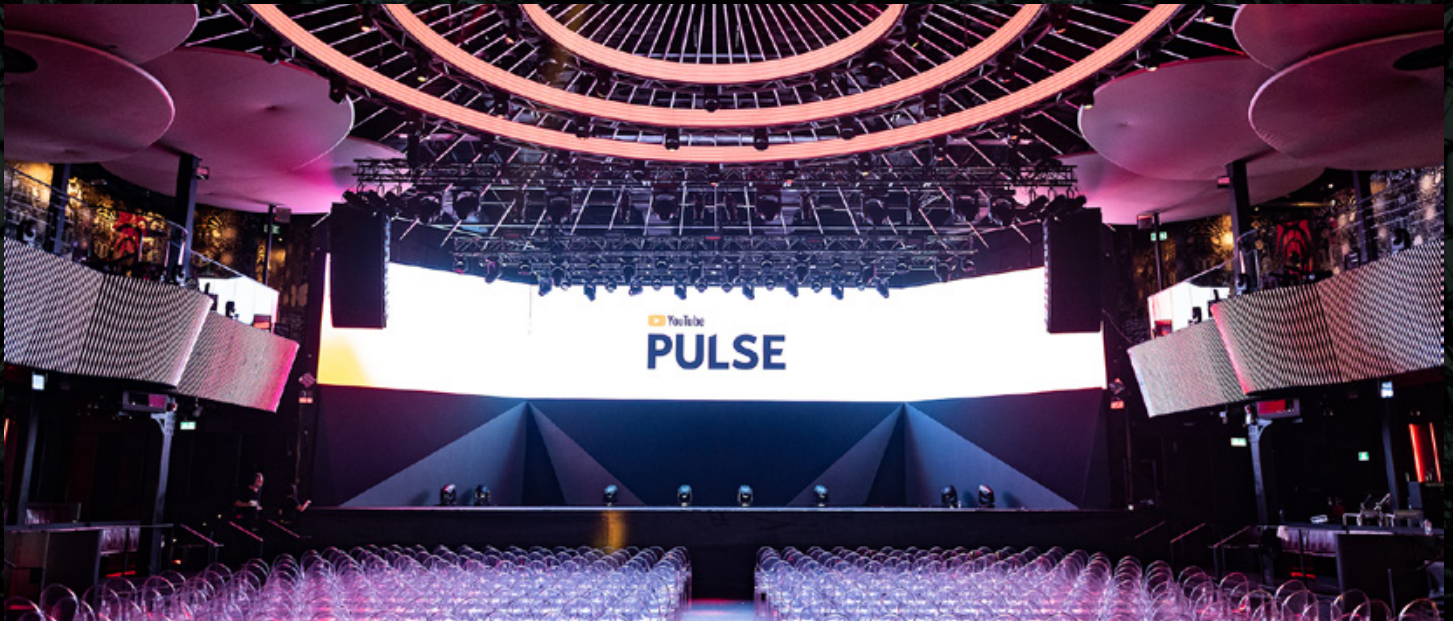
REBEL ESTABLISHES A NEW INDUSTRY STANDARD FOR CORPORATE AND SOCIAL EVENT EXPERIENCES IN TORONTO; MERGING UNRIVALED CUSTOMER SERVICE, STRIKING DESIGN AND STATE-OF-THE-ART TECHNOLOGY. THIS 45,000 SQUARE FOOT VENUE HOUSES FOUR DISTINCT SPACES THAT OFFER DIVERSITY IN AMBIENCE, DÉCOR AND VIBE. THE BRILLIANT CONJUNCTION OF PRODUCTION ELEMENTS SUCH AS AVANT-GARDE AUDIOVISUAL TECHNOLOGY, THEATRICAL LED LIGHTING INSTALLATIONS, AND CUSTOMIZED LUXURIOUS FURNITURE IS GUARANTEED TO OFFER YOUR GUESTS A UNIQUE, EXTRAORDINARY AND UNPARALLELED EXPERIENCE.

CLICK TO VIEW:

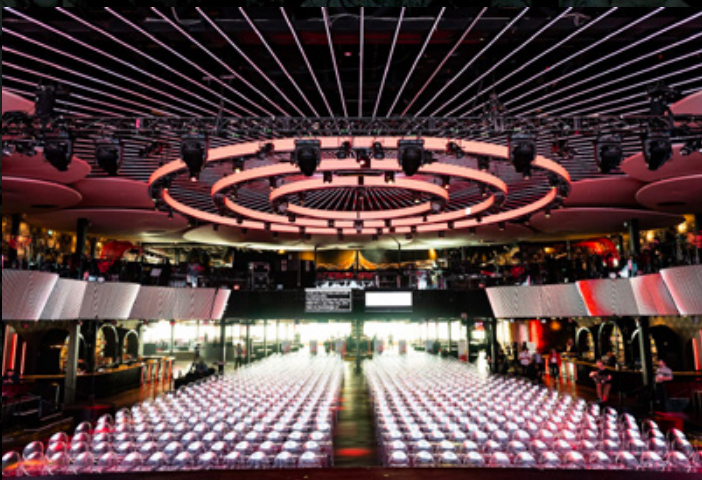
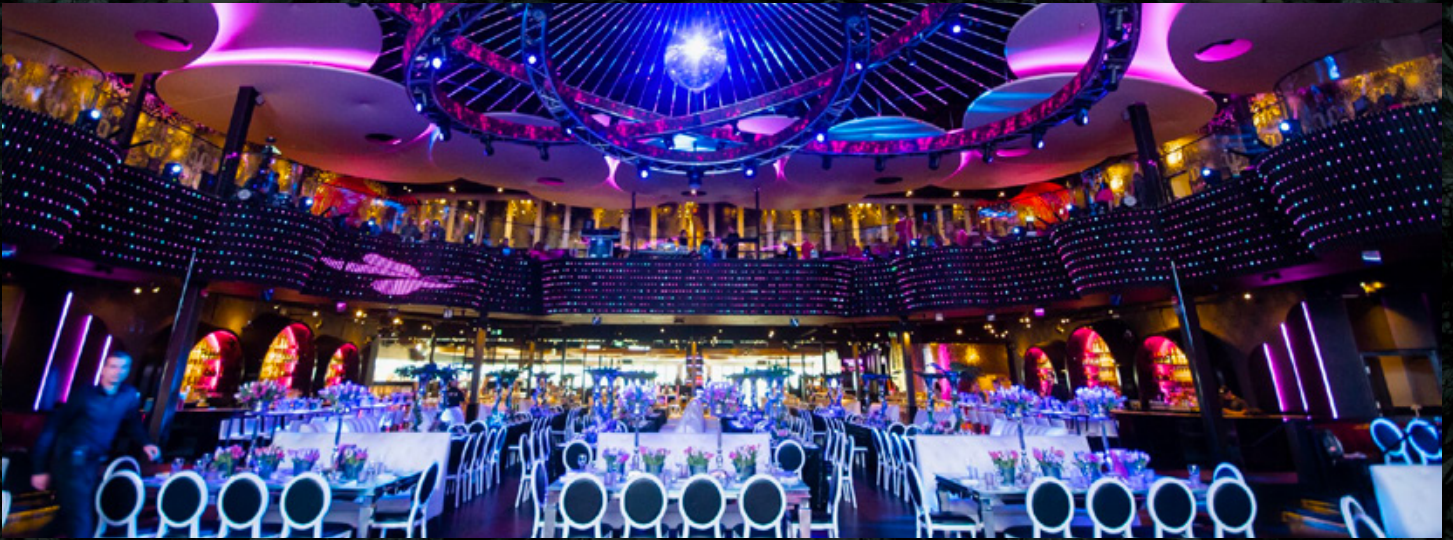
[REBEL FULL VENUE PHOTOS](#)

[REBEL WALKTHROUGH VIDEO](#)

[REBEL 360 VIDEO](#)



REBEL OVERVIEW



- 3750 Venue Capacity
- Five distinctive event spaces over two floors
- Multi-dimensional motorized trussing complete with intelligent lighting hung beneath an LED Filled Ceiling
- Built in state of the art sound system with concert acoustics
- Multimedia production elements and built in theatrical lighting effects
- Large capacity restrooms & lush amenities throughout
- 26 illuminated full service Bar Stations
- All rooms are wheelchair accessible
- Grand private terrace & 2 upper patios offering an iconic view of Lake Ontario and Toronto's skyline
- Dual Sided Coat Check and Registration Facilities
- Fixed opulent lounges available throughout venue, offering an unobstructed and exceptional view of the stage and central light show
- Convenient parking available across the street for 500 vehicles
- 3 panelled 72 ft. video wall
- Full in-house planning services and event support

MAIN ROOM SPECIFICATIONS



- 9000 Usable sq. ft.
- 29 ft. ceiling height, featuring the central Circle Truss
- 8 illuminated full service bars
- 65 Foot Stage
- VIP lounges along the right and left-hand sides of the main stage
- Direct backstage access to 4 dressing rooms, 2 production offices, private restrooms and showers
- 72 ft. LED Video Wall Installation
- Floating LED panels surrounding main floor
- Concert quality Surround Sound
- Exclusive coat check and washrooms

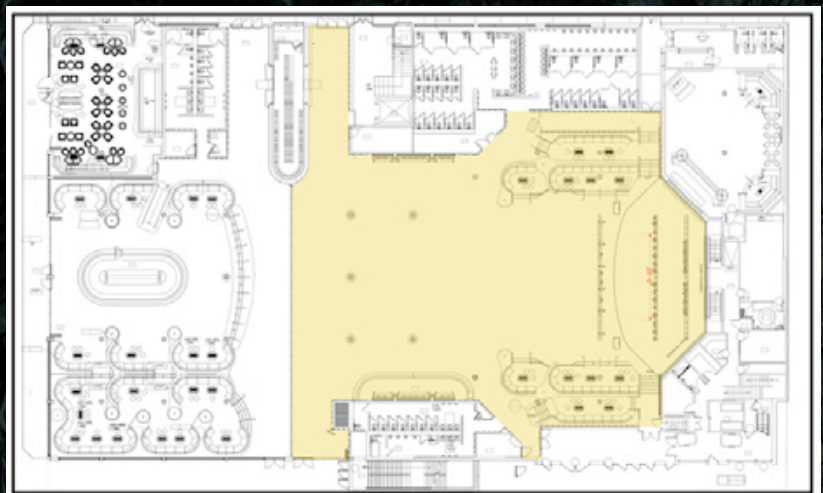
EVENT

Theatre Style Seating
Cocktail Reception
Banquet

CAPACITY

1100
1500
750

*Capacity may vary according to event requirements and activations



SAVAGE



- Whimsical Decor
- Custom Designed Furnishing
- Private Restrooms
- Private Coat Check
- Private Entrance

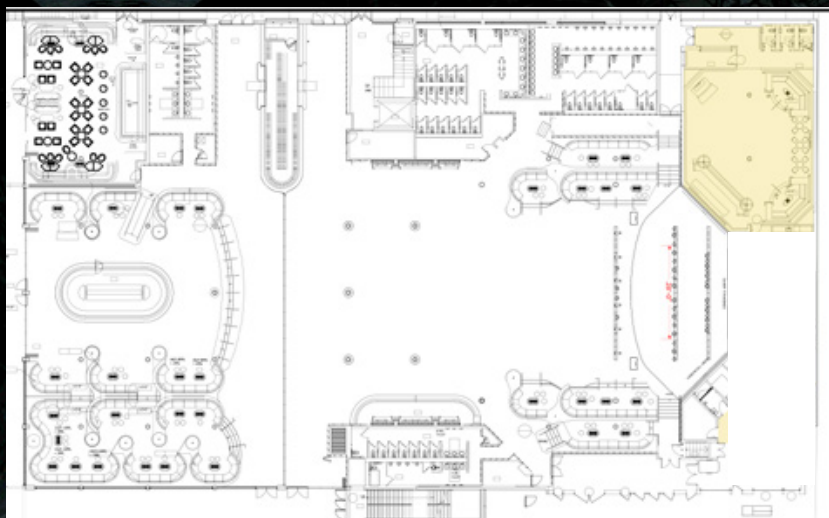
EVENT

Cocktail Reception

CAPACITY

100

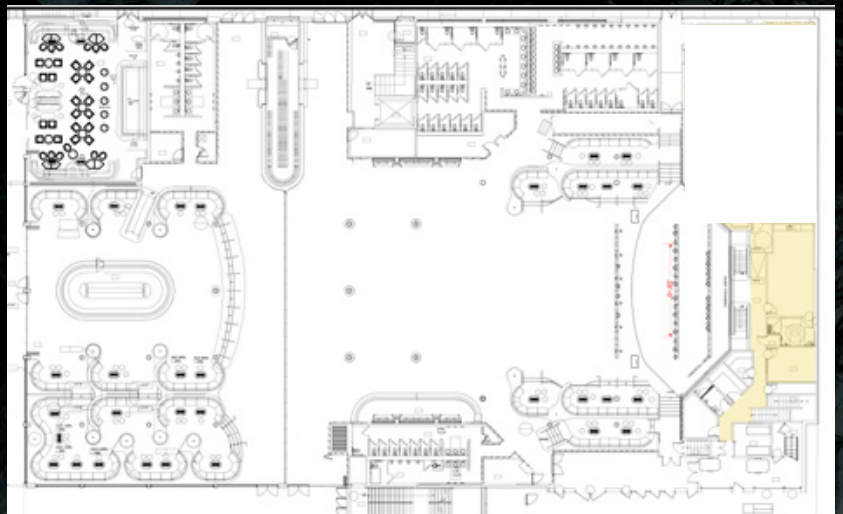
*Capacity may vary according to
event requirements and activations



BACKSTAGE AMENITIES



- 4 Dressing Rooms
- 2 Production Offices
 - Dual Direct Access
- Headliner Dressing Room
 - With Wet Bar and Full Restroom
 - Immediate Stage Access
- Wi-Fi Throughout



CITY BAR



- 7500 Usable sq. ft.
- 6 illuminated full service Bar Stations
- Customizable LED lighting throughout
- The entire west wall is composed of glass panels, offering a beautiful view of the grand terrace, Lake Ontario and Toronto Skyline
- Fixed, multi-level banquettes apt to seat 150 guests comfortably
- Direct access to 135 ft wide terrace overlooking Lake Ontario and Toronto's skyline
- Wheelchair Accessible
- Exclusive coat check and washrooms

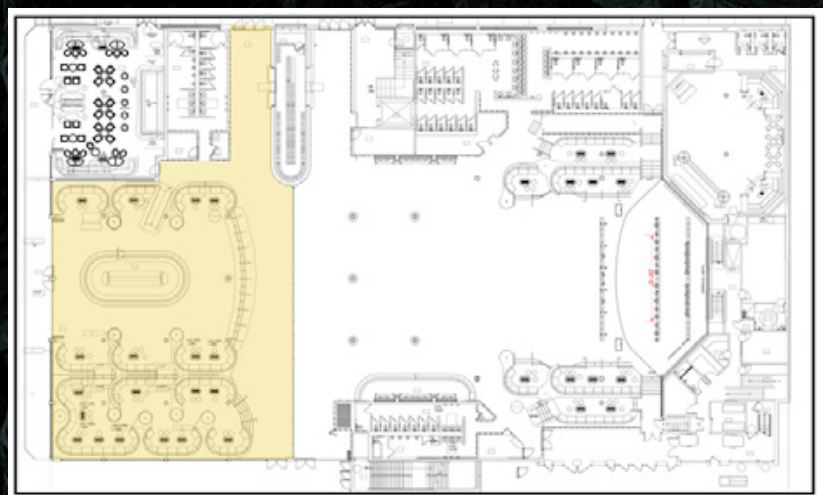
EVENT

Cocktail Reception

CAPACITY

500

*Capacity may vary according to event requirements and activations

[VIEW CITY BAR PHOTOS](#)


THE PURPLE ROOM



- 1600 Usable sq. ft
- Full Service Bar
- Private entrance and deck overlooking Lake Ontario and Toronto Skyline

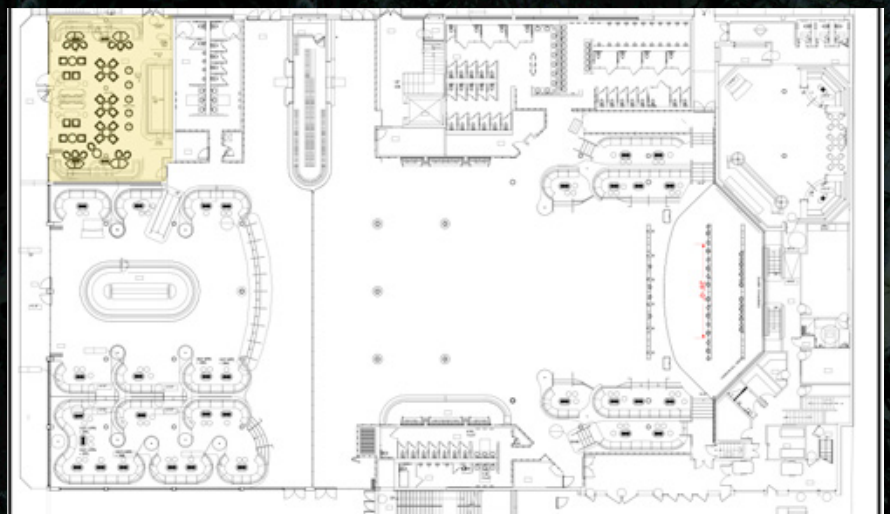
EVENT

Cocktail Reception

CAPACITY

80

*Capacity may vary according to event requirements and activations

[VIEW PURPLE ROOM PHOTOS](#)

NOIR



- Glass room features a retractable roof
- 6 illuminated full service bar stations
- Floor to ceiling glass panels dividing main reception area from mezzanine
- Built-in VIP lounges along mezzanine overlooking main room
- Direct access to two private upper patios with a spectacular Lakeview
- Exclusive washrooms and coat check
- Ample soft seating
- Elevator access

EVENT

Theatre

Cocktail

Cocktail + Mezzanine

Banquet

CAPACITY

300

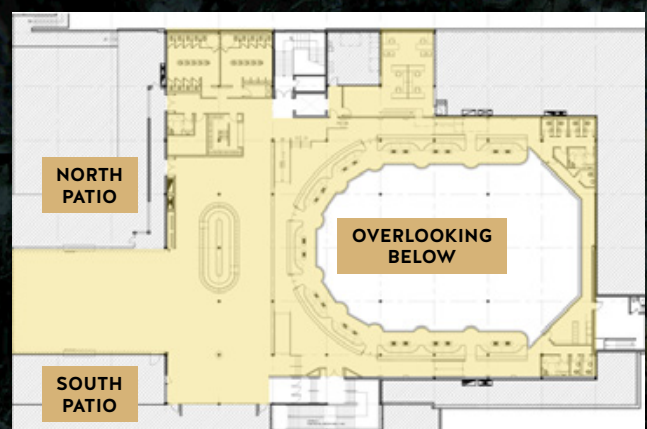
400

900

200

*Capacity may vary according to event requirements and activations

[VIEW NOIR PHOTOS](#)



REBEL MAIN ROOM SPEC SHEET



AUDIO SPECIFICATIONS

MAIN PA CONSISTS OF THE FOLLOWING:

- D&B J8 Series Line Array - 10 Cabs
- D&B J12 Series Line Array - 2 Cabs
- D&B B2 Sub Cabinets - 10 Subs
- Powered with 30D D&B Amplifiers - 16 Amps
- D&B Y7P Front Fills - 2 Cabs
- Under balcony zone and upper and rear Delay Speakers EV - EVF-1122D - 16 Cabs
- Avid Profile Venue Console for FOH

MONITOR PACKAGE INCLUDES THE FOLLOWING:

- SC 48 Monitor console
- 12 D&B M4 Passive Wedges
- 1 x B6 drum sub
- 8 Passive mixes
- 2 D&B B2 Subs (Sidefill)
- 2 D&B V10 Tops (Sidefill)
- Custom DJ Booth, LED panels, 26ft wide (portable)

STAGE POWER & BREAKOUTS

- 3 - 12 Channel Stage Boxes
- 3 - 30amp Breakout Boxes

MICROPHONES & STANDS

- 12 Tall Boom Stand
- 12 Short Boom Stand
- 4 Shure SM81
- 6 Shure SM58
- 6 Shure SM57
- 4 Sennheiser 604
- 4 Sennheiser e904
- 1 Shure Beta 52
- 1 Shure Beta 91
- 4 Active Direct Input boxes
- 6 Passive Direct Input boxes

LIGHTING

UPSTAGE TRUSS:

- 6 Elation Platinum HFX - 280W Lamp RGBY 3-in-1 Luminaire (Beams)
- 6 Elation ZW19 - 10W RGBW 4-in-1 LED (Washes)

MIDSTAGE TRUSS:

- 8 Elation Platinum HFX
- 8 Elation ZW19

FOH TRUSS 1:

- 6 LED Lekos
- 6 ZW19

FOH TRUSS 2:

- 16 Elation ACL 360i - 60W RGBW 4-in-1 LED

LIGHTING CONSOLE:

- MA2 on PC With Command Wing & Touch screen monitor

VIDEO

2 OUTER LED WALLS:

- 6.4MM Pixel Pitch
- 1080h x 1698w Resolution
- 1600 HZ Refresh Rate

CENTRE LED WALL:

- 10MM Pixel Pitch
- 732h x 1920w Resolution
- 1600 HZ Refresh Rate

CHRISTIE SPYDER X20 - 0808 INPUTS:

- HDSDI, SDI, 3G SDI, DVI, RGBHV, Composite

NOIR SPEC SHEET



AUDIO SPECIFICATIONS

MAIN PA CONSISTS OF THE FOLLOWING:

- 4x X-Array "Xen"
- 4x Bass Max Subs

MONITOR PACKAGE INCLUDES THE FOLLOWING:

- 2 x d&B Y10P's
- 2x d&B B2 - Subs

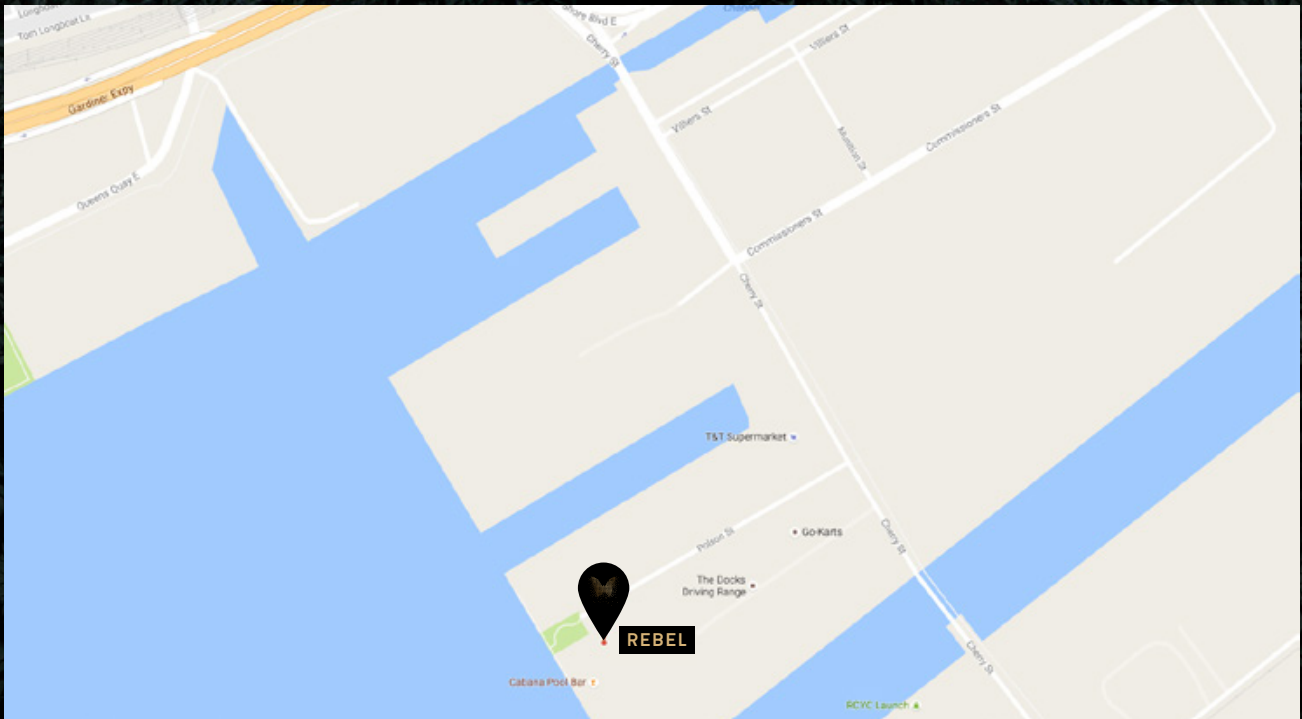
LIGHTING

- 16x Mac 250
- 4x Elation Bean 5R
- 2x Elation ZW19
- 4x Cuepix Sickpack
- 2x SGM Strobe

OTHER SPECIFICATIONS

- Custom elevated DJ Booth (fixed)

CONTACT

**MIRELA DAVIS****DIRECTOR OF CORPORATE SALES AND EVENTS**

Head Office: (416) 869-9444 ext.268

Polson Pier Office: (416) 469-5655 ext.268

M: (416) 624-5188

mirela@inkentertainment.com

CARLO SUAREZ**CORPORATE EVENT MANAGER & SALES**

Polson Pier Office: (416) 469-5655 ext.303

M: (416) 939-1437

carlo@inkentertainment.com

11 POLSON STREET, TORONTO, ON, M5A 1A4

T: (416) 469 5655 | F: (416) 469 5547

VISIT WEBSITE

 @INKVENUES

 @INKVENUES

 INK VENUES