



REBEL

VENUE INFORMATION

11 POLSON STREET, TORONTO, ON, M5A 1A4

T: (416) 469-5655 | F: (416) 469-5547

VISIT WEBSITE

 @INKVENUES

 @INKVENUES

 @INKVENUES

INK 

WELCOME TO REBEL



REBEL ESTABLISHES A NEW INDUSTRY STANDARD FOR CORPORATE AND SOCIAL EVENT EXPERIENCES IN TORONTO; MERGING UNRIVALED CUSTOMER SERVICE, STRIKING DESIGN AND STATE-OF-THE-ART TECHNOLOGY. THIS 45,000 SQUARE FOOT VENUE HOUSES FOUR DISTINCT SPACES THAT OFFER DIVERSITY IN AMBIENCE, DÉCOR AND VIBE. THE BRILLIANT CONJUNCTION OF PRODUCTION ELEMENTS SUCH AS AVANT-GARDE AUDIOVISUAL TECHNOLOGY, THEATRICAL LED LIGHTING INSTALLATIONS, AND CUSTOMIZED LUXURIOUS FURNITURE IS GUARANTEED TO OFFER YOUR GUESTS A UNIQUE, EXTRAORDINARY AND UNPARALLELED EXPERIENCE.

CLICK TO VIEW:

[REBEL WALKTHROUGH VIDEO](#)

[REBEL 360 VIDEO](#)

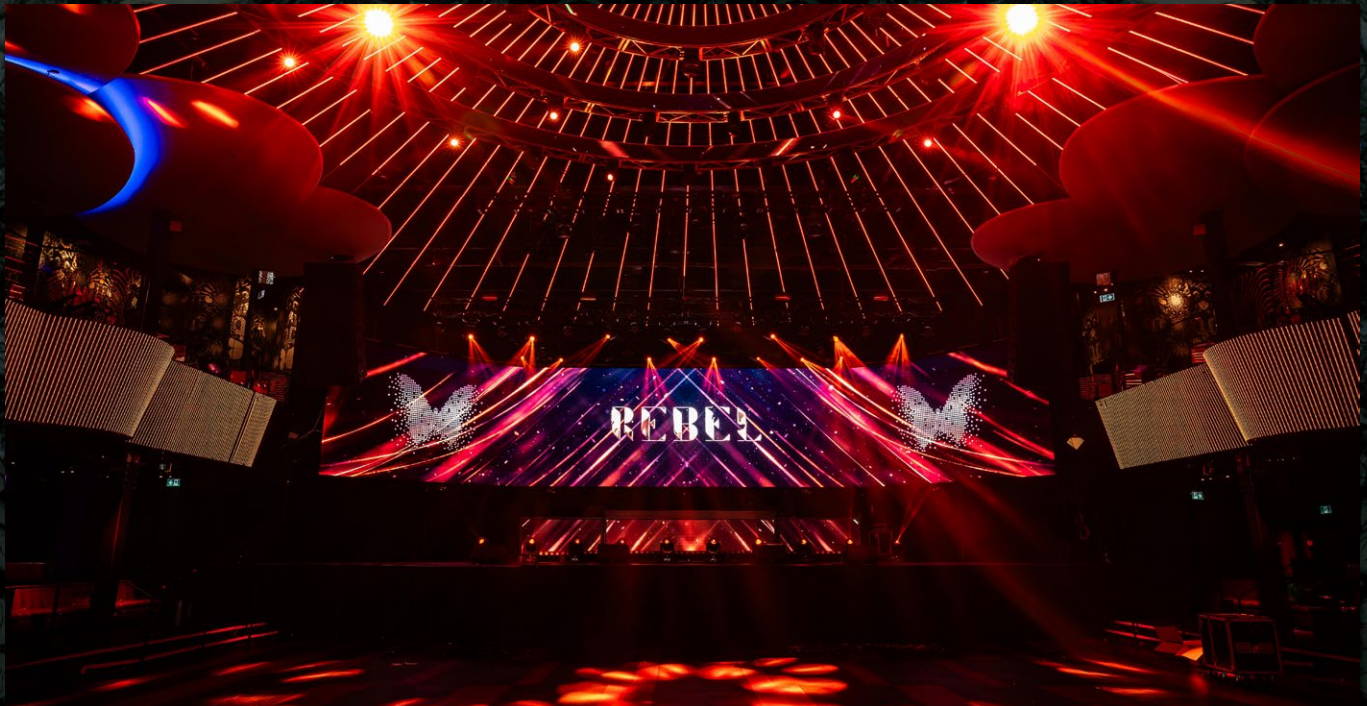


REBEL OVERVIEW



- 3750 Venue Capacity
- Five distinctive event spaces over two floors
- Multi-dimensional motorized trussing complete with intelligent lighting hung beneath an LED Filled Ceiling
- Built in stage, 80ft curved 4K video wall, state of the art sound system with concert acoustics.
- Multimedia production elements and built in theatrical lighting effects
- Large capacity restrooms & lush amenities throughout
- 26 illuminated full service Bar Stations
- All rooms are wheelchair accessible
- Grand private terrace & 2 upper patios offering an iconic view of Lake Ontario and Toronto's skyline
- Dual Sided Coat Check and Registration Facilities
- Fixed opulent lounges available throughout venue, offering an unobstructed and exceptional view of the stage and central light show
- Convenient parking available across the street for 500 vehicles
- Full in-house planning services and event support

MAIN ROOM SPECIFICATIONS



- 9000 Usable sq. ft.
- 29 ft. ceiling height, featuring the central Circle Truss
- 8 illuminated full service bars
- Built in 60ft stage
- VIP lounges along the right and left-hand sides of the main stage
- Direct backstage access to 4 dressing rooms, 2 production offices, private restrooms and showers
- 80ft curved 4K LED video wall
- Floating LED panels surrounding main floor
- Concert quality Surround Sound
- Exclusive coat check and washrooms

EVENT

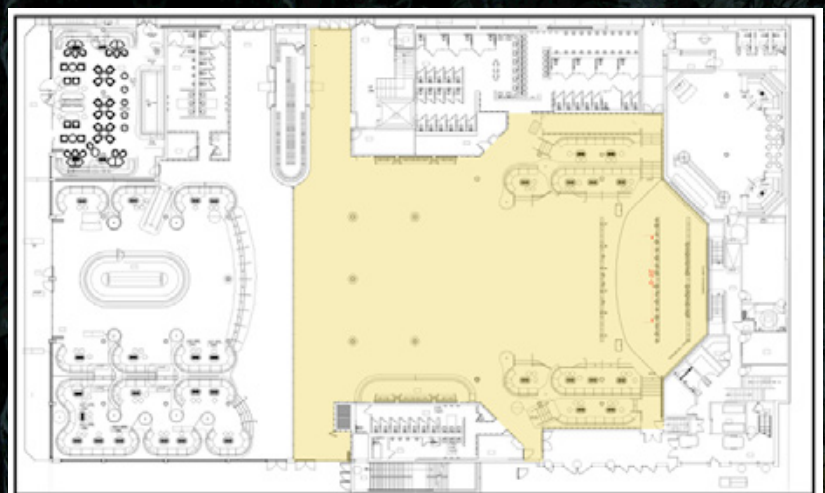
Theatre Style Seating
 Cocktail Reception
 Banquet

CAPACITY

1100
 1500
 750

*Capacity may vary according to event requirements and activations

TECHNICAL SPECIFICATIONS:



SAVAGE



- Whimsical Decor
- Custom Designed Furnishing
- Private Restrooms
- Private Coat Check
- Private Entrance

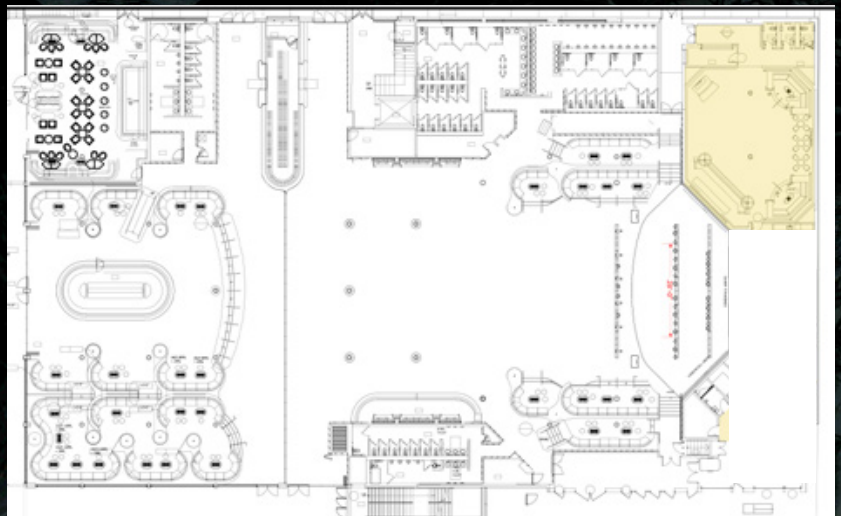
EVENT

Cocktail Reception

CAPACITY

100

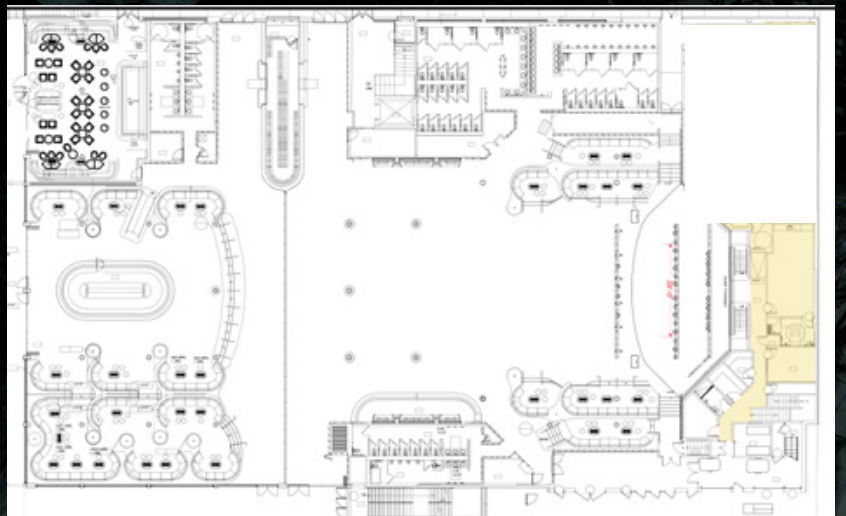
*Capacity may vary according to event requirements and activations



BACKSTAGE AMENITIES



- 4 Dressing Rooms
- 2 Production Offices
- Dual Direct Access
- Headliner dressing room with wet bar and private three piece restroom
- Wi-Fi Throughout



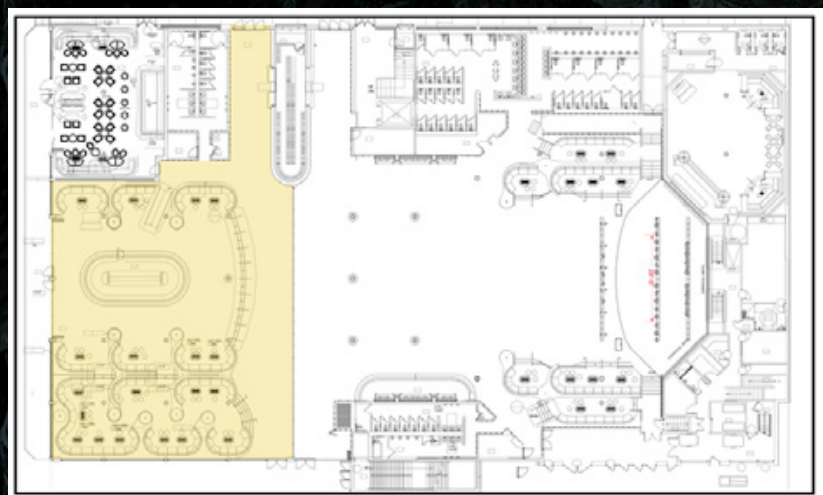
CITY BAR



- 7500 Usable sq. ft.
- 6 illuminated full service Bar Stations
- Customizable LED lighting throughout
- Floor to ceiling windows and 180 degree view of Lake Ontario and the Toronto city skyline
- Fixed, multi-level banquettes, seating up to 180
- Private walkout deck above the water's edge
- Wheelchair Accessible
- Exclusive coat check and washrooms

EVENT	CAPACITY
Cocktail Reception	500

*Capacity may vary according to event requirements and activations



THE PURPLE ROOM



- 1600 Usable sq. ft
- Full Service Bar
- Private entrance and deck overlooking Lake Ontario and Toronto Skyline

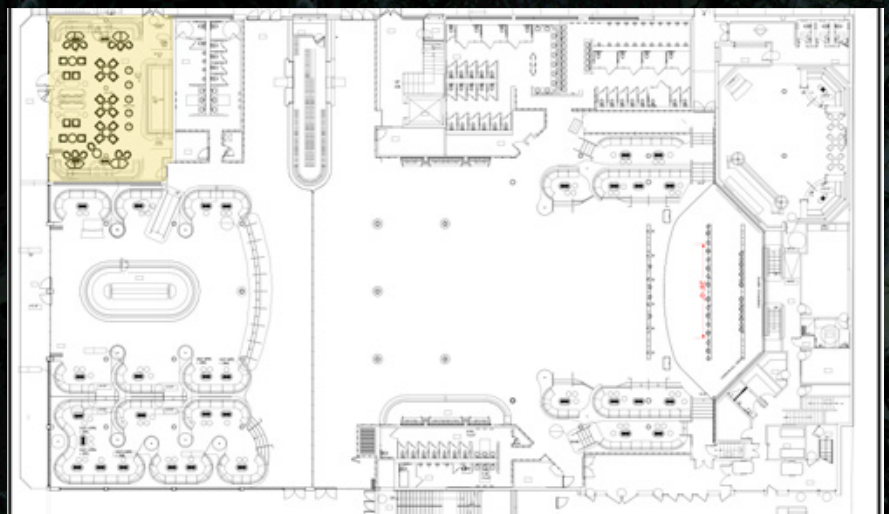
EVENT

Cocktail Reception

CAPACITY

80

*Capacity may vary according to event requirements and activations



NOIR



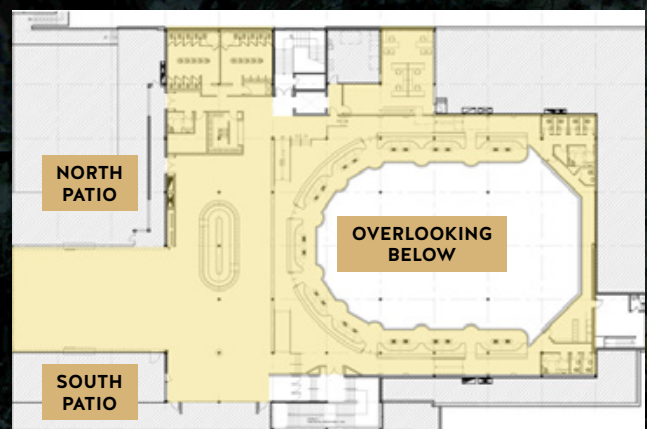
- Glass solarium with two private patios overlooking Lake Ontario and the Toronto city skyline
- 6 illuminated full service bar stations
- Floating glass wall that opens to the balcony overlooking the main floor and stage
- Built in VIP lounges on the balcony level
- Built in stage, DJ booth, intelligent lighting, audio, video and digital branding elements
- Exclusive washrooms and coat check
- Ample soft seating
- Elevator access

EVENT

CAPACITY

Theatre	300
Cocktail	500
Cocktail, Noir & Balcony	900
Banquet	200
Cocktail North Patio	80
Cocktail South Patio	60

*Capacity may vary according to event requirements and activations



REBEL MAIN ROOM SPEC SHEET



AUDIO SPECIFICATIONS

MAIN PA CONSISTS OF THE FOLLOWING:

- D&B J8 Series Line Array - 10 Cabs
- D&B J12 Series Line Array - 2 Cabs
- D&B B2 Sub Cabinets - 10 Subs
- Powered with 30D D&B Amplifiers - 16 Amps
- D&B Y7P Front Fills - 2 Cabs
- Under balcony zone and upper and rear Delay Speakers EV - EVF-1122D - 16 Cabs
- Avid Profile Venue Console for FOH

MONITOR PACKAGE INCLUDES THE FOLLOWING:

- SC 48 Monitor console
- 12 D&B M4 Passive Wedges
- 1 x B6 drum sub
- 8 Passive mixes
- 2 D&B B2 Subs (Sidefill)
- 2 D&B V10 Tops (Sidefill)
- Custom DJ Booth, LED panels, 26ft wide (portable)

STAGE POWER & BREAKOUTS

- 3 - 12 Channel Stage Boxes
- 3 - 30amp Breakout Boxes

MICROPHONES & STANDS

- 12 Tall Boom Stand
- 12 Short Boom Stand
- 4 Shure SM81
- 6 Shure SM58
- 6 Shure SM57
- 4 Sennheiser 604
- 4 Sennheiser e904
- 1 Shure Beta 52
- 1 Shure Beta 91
- 4 Active Direct Input boxes
- 6 Passive Direct Input boxes

LIGHTING

UPSTAGE TRUSS:

- 6 Elation Platinum HFX - 280W Lamp RGBY 3-in-1 Luminaire (Beams)
- 6 Elation ZW19 -10W RGBW 4-in-1 LED (Washes)

MIDSTAGE TRUSS:

- 8 Elation Platinum HFX
- 8 Elation ZW19

FOH TRUSS 1:

- 6 LED Lekos
- 6 ZW19

FOH TRUSS 2:

- 16 Elation ACL 360i - 60W RGBW 4-in-1 LED

LIGHTING CONSOLE:

- MA2 on PC With Command Wing & Touch screen monitor

VIDEO

MAIN VIDEO WALL:

- Roe black onyx 3.4mm
- 42 Panels wide x 7 panels tall - curved on sl + sr 10 Degrees
- Resolution: 6048 w x 1008 h
- Processing: brompton s4
- Scaling/switching: barco s3-4k
- Guest input: 4k
- House input: 4k

CUSTOM LED DJ BOOTH (MOBILE FOLDING):

- 5mm modules
- 28ft wide
- 1508wide x 156high
- 6 ZW19

3 AUTOMATED CIRCLE TRUSS (LED PANELS ON INSIDE + OUTSIDE):

- 5mm modules
- Each slice is 52x416
- Top left corner

LED BALCONY:

- Led tape
- 1024 X 92
- Bottom right corner

LED ROOF:

- Led tape
- 104x520
- Top right corner

NOIR SPEC SHEET



AUDIO SPECIFICATIONS

MAIN PA CONSISTS OF THE FOLLOWING:

- 4x X-Array "Xen"
- 4x Bass Max Subs

MONITOR PACKAGE INCLUDES THE FOLLOWING:

- 2 x d&B Y10P's
- 2x d&B B2 - Subs

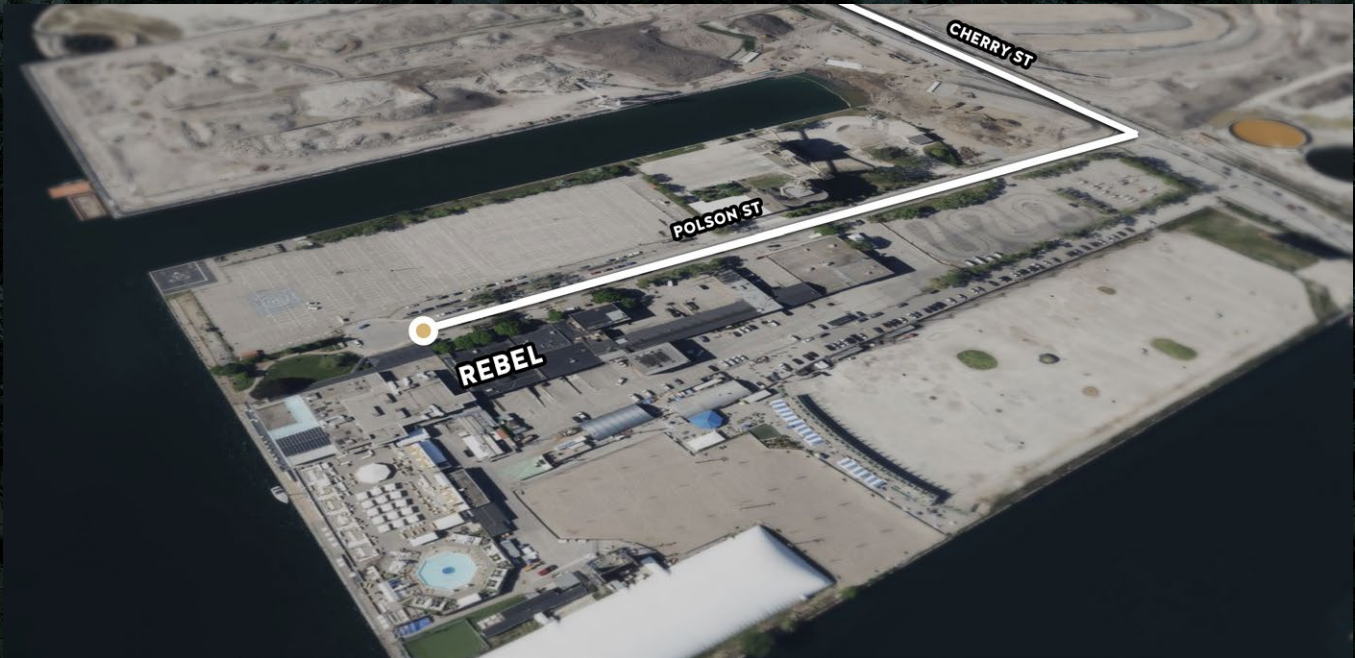
LIGHTING

- 16x Mac 250
- 4x Elation Bean 5R
- 2x Elation ZW19
- 4x Cuepix Sickpack
- 2x SGM Strobe

OTHER SPECIFICATIONS

- Custom elevated DJ Booth (fixed)

CONTACT INFORMATION



MIRELA DAVIS

DIRECTOR OF CORPORATE SALES AND EVENTS

Head Office: (416) 869-9444 ext.268

Polson Pier Office: (416) 469-5655 ext.268

mirela@inkentertainment.com

REBEL

11 POLSON STREET

TORONTO

416.469.5655

[VISIT WEBSITE](#)

PARKING

20 Polson Street, Toronto, ON M5A 1A4.

Parking directly across from 11 Polson Street. Ample parking available.

Valet parking service available.

 [@INKVENUES](#)

 [@INKVENUES](#)

 [@INKVENUES](#)